



## Third Meeting of Range States to the Central Asian Mammals Initiative (CAMI)

Третья встреча стран ареала  
Инициативы по сохранению  
млекопитающих  
Центральной Азии (ЦАИМ)

---

24-26 June 2025, Tashkent, Uzbekistan

**PAKISTAN COUNTRY REPORT**



## Northern Pakistan: Highlands Cross-Road and Unique Ecosystem



We all admire landscape of northern Pakistan: confluence of 4 main mountain ranges  
Unique ecosystems: Hotspot of globally significant species, Evolutionary theatre, and  
Economic value/sustainability  
Vital corridor for wide-ranging species

# Effective Snow Leopard Research and Conservation

## 1. First Country-wide Robust population estimate of snow leopards

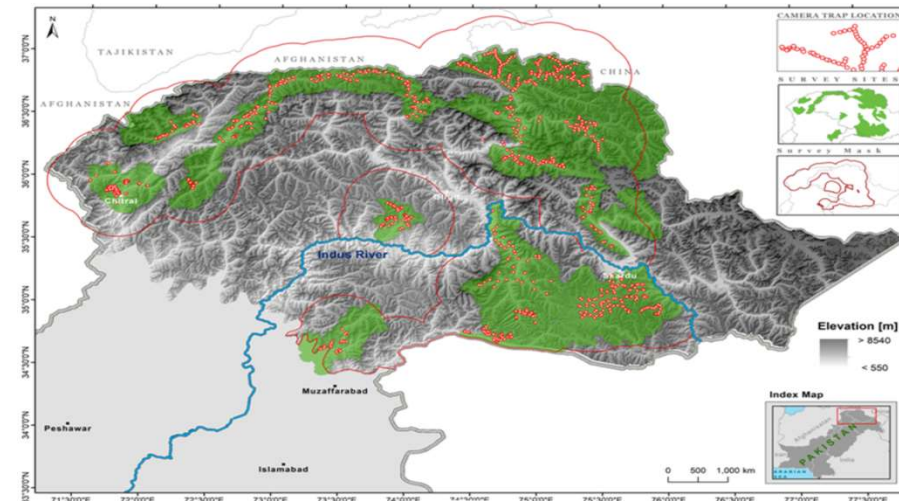
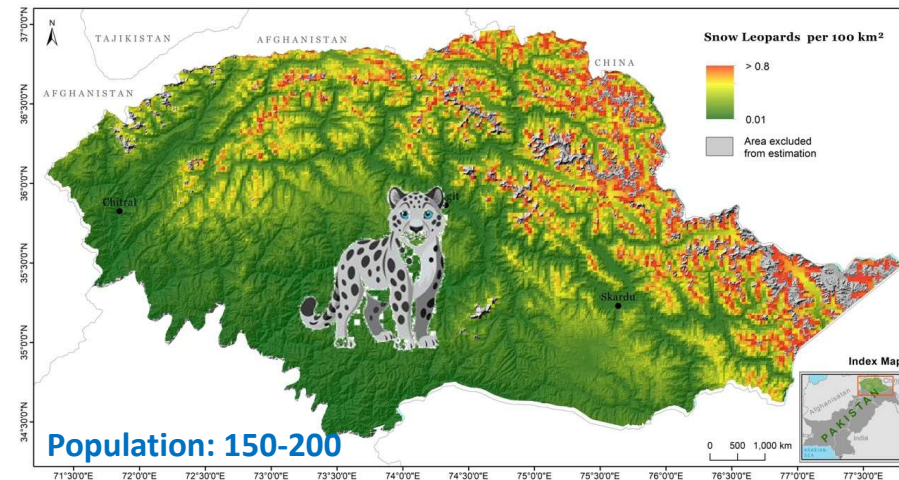
- Extensive camera trapping: Over 1000 camera stations across 40K. sq.km
- Comprehensive genetics sampling: 1200 samples, from 5000 km transects
- Prey-based scenarios

## 2. Integrated Community-based Conservation

- 40,000 HH engaged across 55 valleys, 31,000 sq.km area
- Conflict Mitigation Measures
- Compensation and Livelihood Enhancement
- Conservation Education, Effective wildlife crime control

## 3. Impacts

- Stable snow leopard population
- Acceptance and ownership of carnivores in mountain communities



# Recovery of Himalayan brown Bear

## 1. Population recovery

- 19 bears in 1993 to 80 in 2024
- Population growth rate: 5%

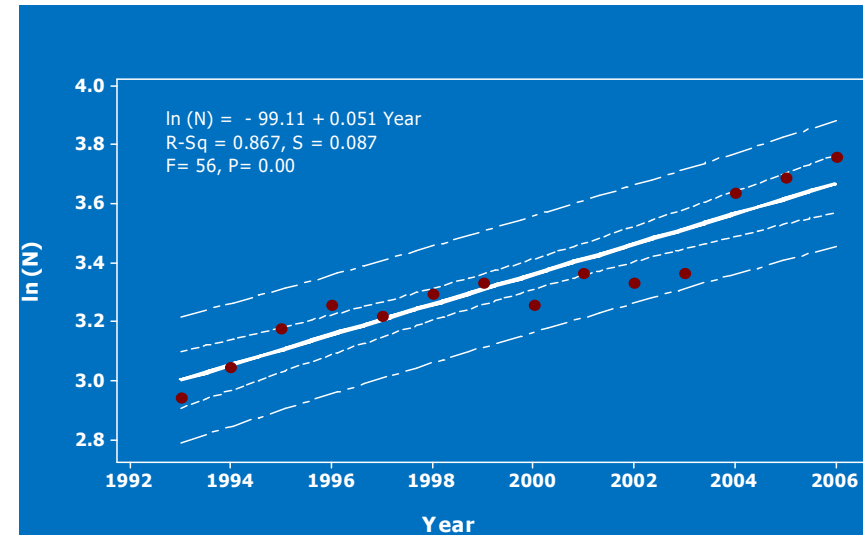
## 2. Slowest reproduction globally

- Low nutritious food and high metabolic cost

## 3. Genetic diversity is moderate moderate

## 4: Success factors

- Establishment of Deosai National Park
- Active conservation and monitoring



Reproductive parameters

	DNP	Other
Age of first reproduction (yr)	8.25	3.0-9.6
Litter interval (yr)	5.7	2.4-5.8
Length of family association (yr)	4.2	
Litter size	1.33	1.4-2.5
Reproductive rate (cubs/ad female/yr)	0.23	0.36-0.96
Cub survival (%)	0.8-0.96	0.34-0.96
Yearling survival (%)	0.85-1.0	0.58-0.97

# Recovery of Mountain Ungulates through Trophy Hunting

## 1. Post-trophy hunting population recovery

- Markhor population shows recovery of 14% since 1999
- Similar pattern for ibex and blue sheep

## 2. Current Population of wild ungulates: 18,595

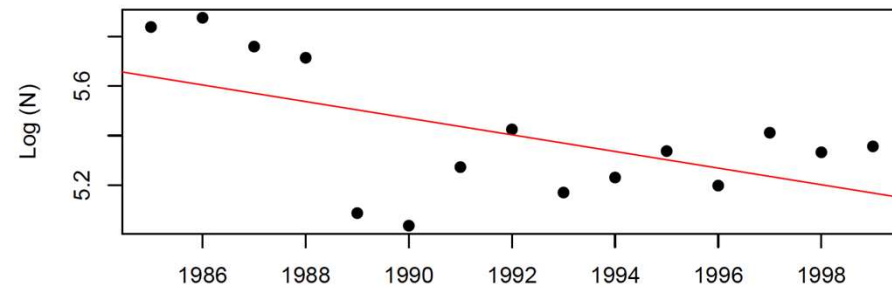
- Ibex: 10,243
- Markhor 7,579
- Blue sheep: 774



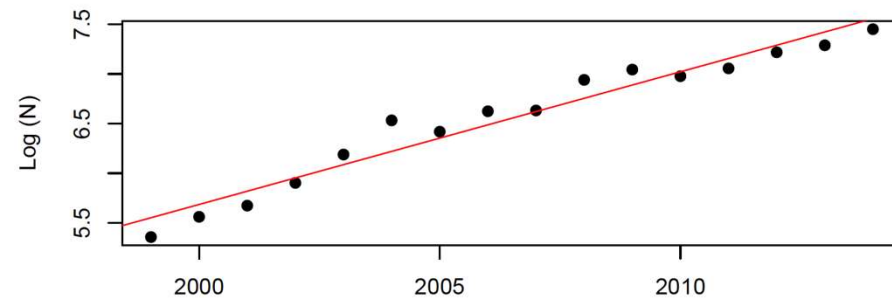
## 3. Economic worth and Impacts

- 80% Economic proceeds go to community
- 4.250 billion PKR have been provided to communities since 1998
- Hunting is allowed on sustainable basis
- Enhanced community ownership for wildlife

MARKHOR POPULATION: PRE-TROPHY HUNTING



MARKHOR POPULATION: POST-TROPHY HUNTING



# What challenges have you faced? / С какими трудностями вы столкнулись?

## ***Key Challenges Faced***

- Lack of funding and low priority in resource allocation.
- Human-wildlife conflict.
- Climate change and habitat degradation.
- Illegal hunting (for meat & trade) and encroachment.
- Lack of awareness and education
- Terrain and capacity limitations for wildlife monitoring
- Regional conflicts & Cross border fencing
- Linear Infrastructure.



# What should be done in the future? / Что следует сделать в будущем?

## **1. Upscaling and Strengthen Community-Based Conservation**

- Why: Local communities are the front-line protectors of wildlife.
- What to do: Expand Community-Controlled Hunting Areas (CCHAs), provide regular training, and increase revenue-sharing to maintain motivation and accountability.
- 10 new CCHAs are planned for creation during 2025-26.

## **2. Enhance Scientific Monitoring and Data Collection**

- Why: Accurate data is essential for making informed conservation decisions.
- What to do: Increase the use of camera traps, GPS tracking, and periodic wildlife censuses. Build local capacity in wildlife biology and data analysis

## **3. Promote Ecotourism and Alternative Livelihoods**

- Why: Diversified income reduces dependency on hunting or resource extraction.
- What to do: Develop eco-tourism infrastructure, train local guides, and market wildlife-watching experiences while ensuring minimal ecological disturbance.

## **4. Mitigate Human-Wildlife Conflict**

- Why: Conflict leads to retaliatory killings of species like snow leopards and bears.
- What to do: Expand livestock insurance programs, install predator-proof corrals, and conduct awareness campaigns on coexistence.

## **5. Climate adaptation and Habitat Protection from Development Pressure**

- Why: Infrastructure and overgrazing are major threats to fragile mountain ecosystems.
- What to do: Enforce environmental impact assessments, designate protected zones, and regulate construction in sensitive areas.



Thank you for your attention!  
Спасибо за внимание!

