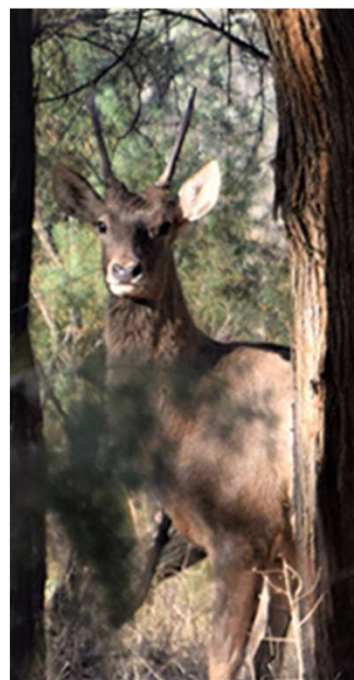




## Third Meeting of Range States to the Central Asian Mammals Initiative (CAMI)

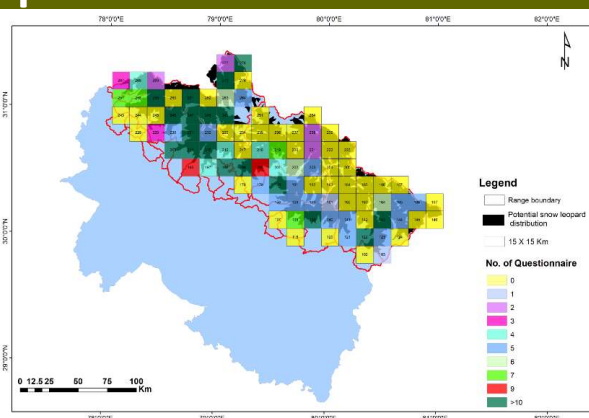
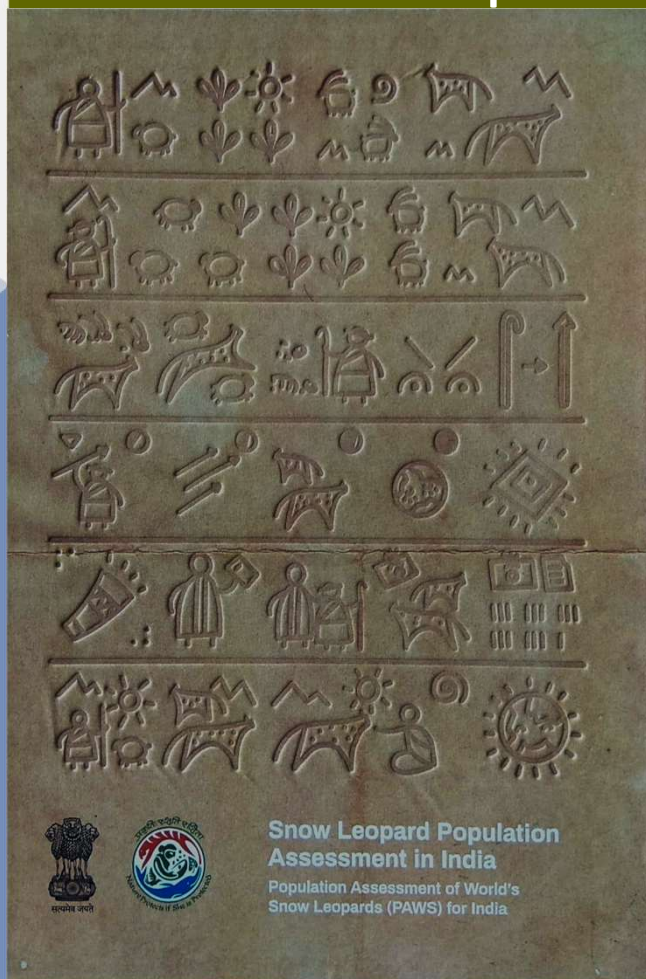
Третья встреча стран ареала  
Инициативы по сохранению  
млекопитающих  
Центральной Азии (ЦАИМ)

24-26 June 2025, Tashkent, Uzbekistan  
24-26 июня, Ташкент, Узбекистан

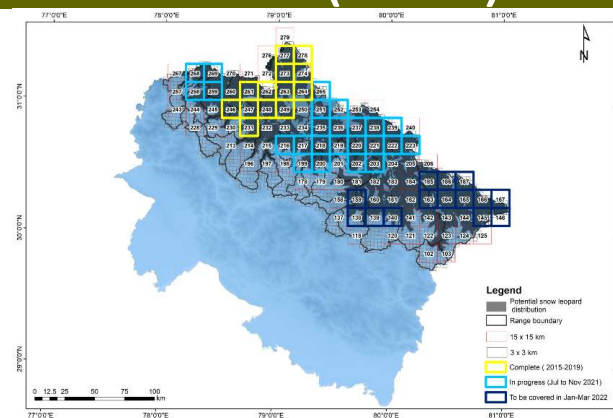


# Three main conservation successes / Три основных природоохранных успеха

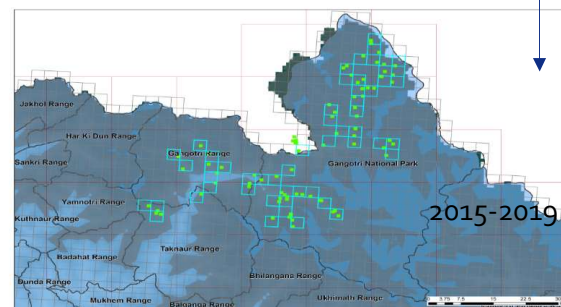
## Snow Leopard Population Assessment in India (SPAI)



Step I



Step II



- 718 snow leopards in country
- Tsarap Chu Conservation Reserve - 1,585 sq km, notified .
- Project Snow Leopard and **SECURE HIMALAYAS** project





## Pashmina Certification Centre



- To support the exporters of Pashmina
- Certification for authentic Pashmina product
- Unique I'd tagging of each tested product
- Online display of authenticity of the product certification

# What challenges have you faced? / С какими трудностями вы столкнулись?



Effects of Climate change

Difficult terrain

Capacity building

# What should be done in the future? / Что следует сделать в будущем?

## Technology/ studies for Emerging Challenges

- **Use of modern technologies** -AI, GPS tracking, camera traps, remote sensing, DNA
- **Grazing and habitat** use interface with domestics for the real-time insights and help in tracking changes over time.
- **Conduct regular and systematic population surveys – Protocols** for species
- **Climate change effects on species** – long term monitoring
- **Interdisciplinary research** that combines ecology, conservation biology, and socio-economics to address the multifaceted challenges
- **Rescue, Restoration and Rehabilitation** based approaches to enhance survival of key species – **3Rs**

## Capacity & Community Interfaces

- **Boost Community-based develop programs/initiatives** - co-existence linkages for wildlife and community co-existence
- **Capacity development** –Competency to deal with HWC
- **Multi-stakeholders involvement in conservation** (Leaderships, Governments, NGOs, Institutions and local communities).
- **Training curricula** programs for local researchers, conservationists, and community members to build capacity in wildlife monitoring
- **Increase public awareness** about species conservation through education campaigns, outreach programs, and **media engagement**.
- Establish **livelihood based incentives** for conservation and **Climate and disaster protection** for local communities

**Sharing of Best practices among Range States**

## Scientific Management and Enforcement

- **Landscape approach** to conservation and integrate with existing urban development
- **Review and updating of conservation plans** to ensure they remain effective and responsive to emerging challenges
- Support **Carrying capacity based initiatives** for management of rangelands and sensitive habitats for wildlife conservation
- Boost infrastructural support for rapid response in terms of **physical and functional competencies** – **Support capacity upgradation programs**
- **Sensitization about legal frameworks** of wildlife protection and synergy between enforcement agencies .
- **Adaptive management** practices for conservation based on new data and changing conditions.
- **Free Ranging Dogs** as threat to Wildlife – ABC methods





Thank you

